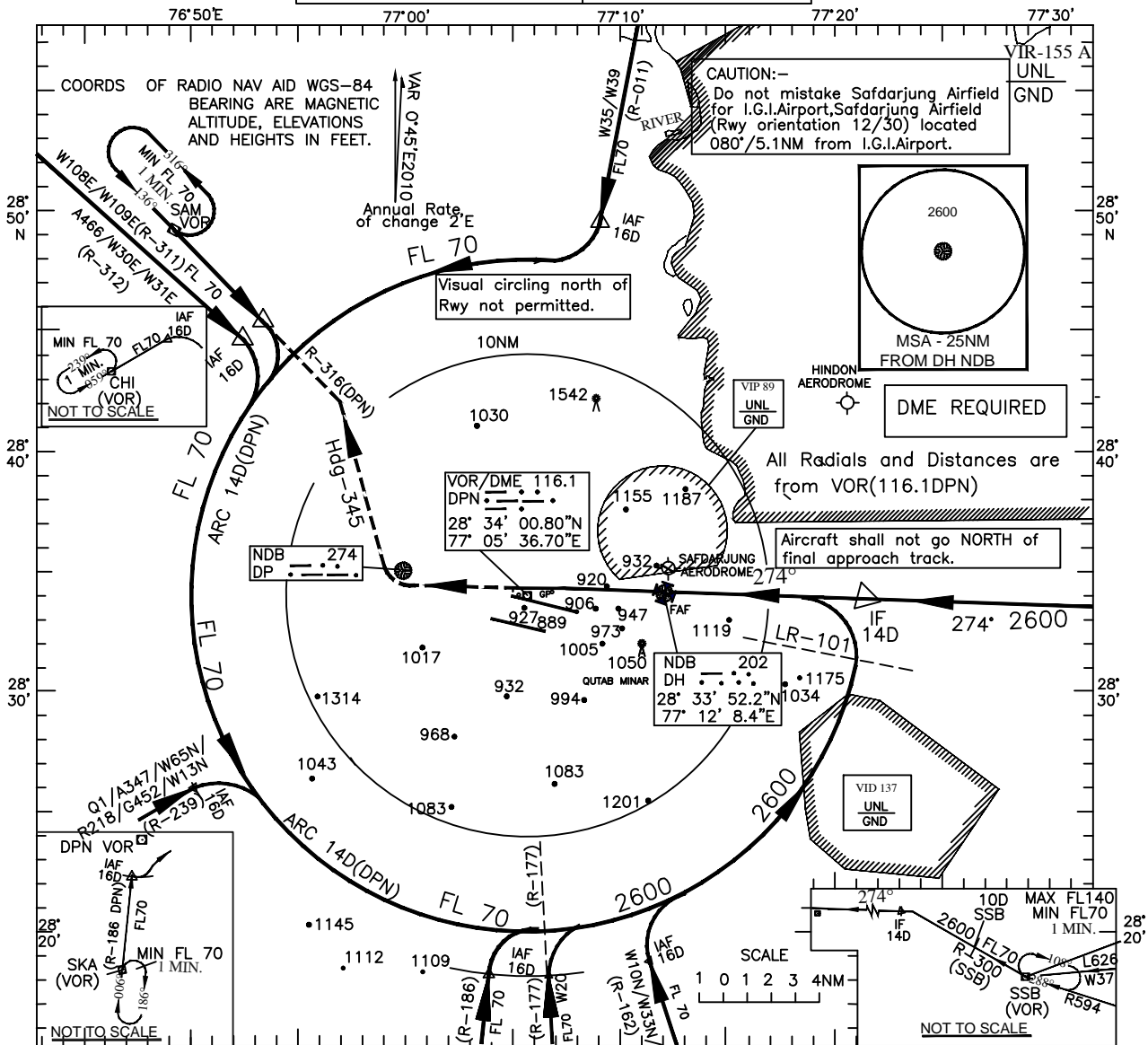


INSTRUMENT
APPROACH
CHART

AERODROME ELEV 777ft.
HEIGHTS RELATED TO
THR RWY 27-ELEV 750ft

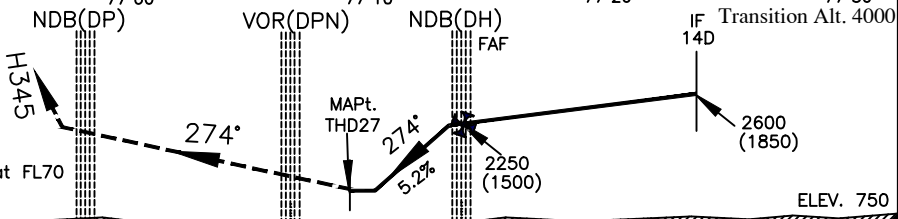
DELHI
INDIA
NDB (Z) RWY 27

| | |
|-------------------------------|---------------|
| TWR | APP |
| 125.85, 118.1, 118.75, 118.25 | 124.2, 126.35 |



MISSED APPROACH

Climb straight ahead, Crossing NDB(274 DP) or 5D (116.1DPN) turn RIGHT on heading 345°M to establish R-316(116.1DPN) climbing to FL70 to join holding at SAMPLA VOR(117.0 SAM) or as instructed by ATC.



NAUTICAL MILES FROM THR RWY 27

| | | | | | | | | | |
|----------------------|-----------|-----------|------------------------------------|------|------|------|------|------|------|
| O C A (H) | | | | | | | | | |
| CATEGORY OF AIRCRAFT | A/B | C/D | | | | | | | |
| STRAIGHT-IN | 1340(590) | 1340(590) | | | | | | | |
| VISUAL CIRCLING | 1470(693) | 1570(793) | Time & Rate of Descent information | | | | | | |
| | | | Distance from FAF to MAPt 4.6NM | | | | | | |
| | | | Ground speed (kt.) | 80 | 100 | 120 | 140 | 160 | 180 |
| | | | Time(Min :Sec) | 3:27 | 2:46 | 2:18 | 1:58 | 1:44 | 1:32 |
| | | | Rate of descent (ft/min) | 420 | 525 | 630 | 735 | 845 | 950 |

DRG. NO. AAI/15-IALC/08/01.05.2016